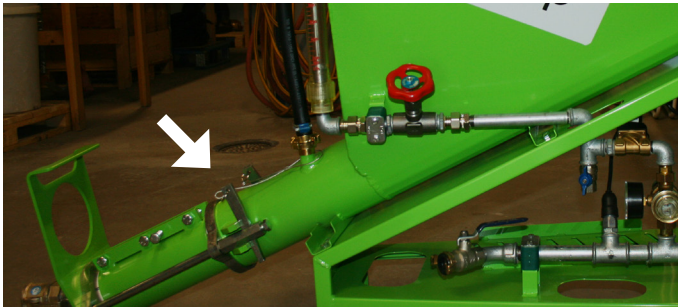


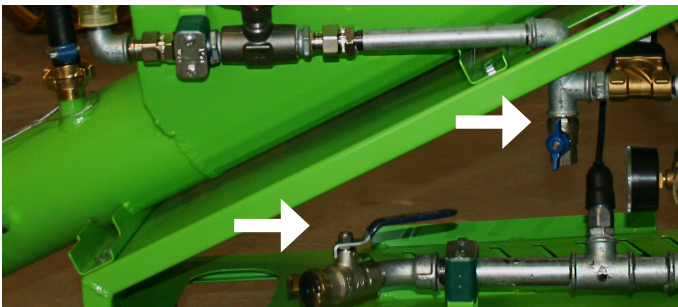
STARTUP

1. Place the pump flat and stable.



2. Fit the mantle to the pump with the wedges.

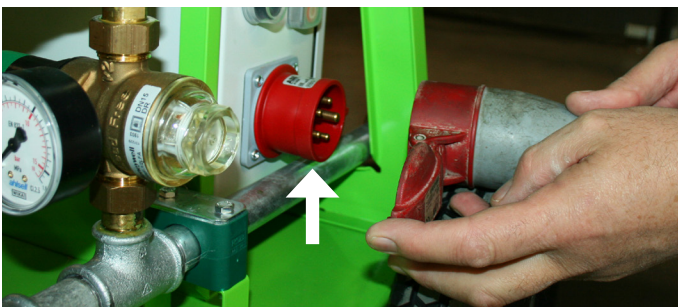
3. The mixing shaft will be installed later.



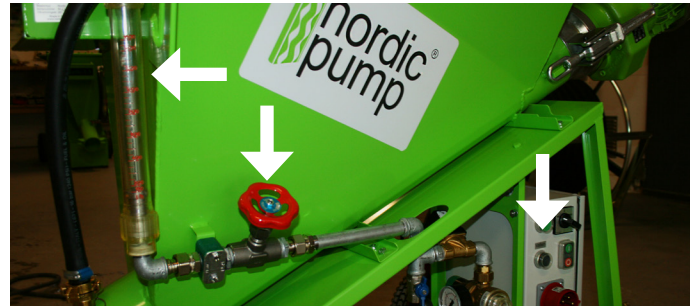
4. Make sure the drain cranes are closed.



5. Connect the water to the clutch connector on the back of the pump.



6. Plug the power cord 3 phase 400V to the connector on the electric cabinet (left side).



7. Press the **Water** (Vatten) button to adjust the amount of water in the measuring pipe. The amount of water is read at the top of the cone.



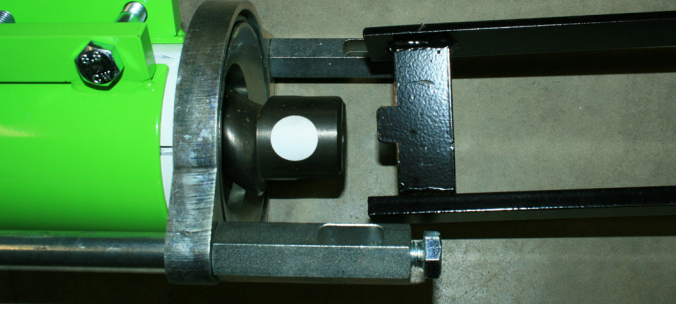
8. Press the **RESET** (green 1) button to put the pump into operable mode.



9. Press the **Motor** button on the electric cabinet and check that the engine is in the right direction, the engine should rotate counterclockwise, see the arrow on engine hood.



10. If the engine is in the wrong direction change the direction of rotation with the phase switch on the electric cabinet.



11. Fit the mixer shaft, ensuring it is in the correct position in the rotor.



12. Install the remote control cable to the electric cabinet.



13. Connect the pump hose to the water outlet on the pump and fill approximately five liters of water and then connect the hose to the pump.



14. Press the **WATER** button and fill water in the mixing chamber.

15. Fill three bags and start the pump, fill with more bags and check the water mixture on the measuring pipe.

16. Take fluid samples on the screeds and adjust as necessary to get the correct water mixture (the flow rate is on the sack).

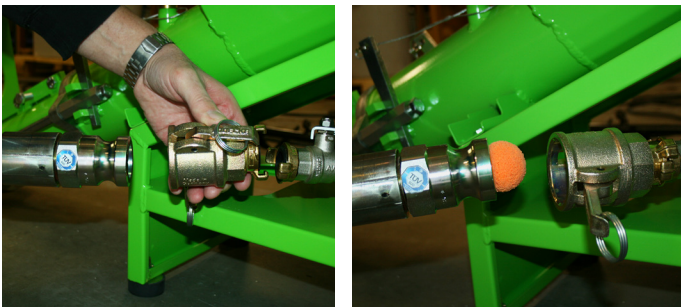
NOTE!

As soon as water, electricity or microswitch has broken the pump reset must be done by pressing the **RESET** (green 1) button. Keep in mind that when pumping special concrete you must fill "slurry" in the hose to lubricate it extra.

CLEANING



Hold down the powder level in the hopper, you can hold down the level until only half a pound of powder quarries are left in the hopper. Avoid getting water into the hose, if water comes in to the hose before the cleaning ball there is a risk for hose stop.



1. Remove the hose and put in a cleaning ball and connect the hose to the plugged water outlet on the pump.

2. Pull out the screeds from the hose with the cleaning ball at the assigned cleaning point.

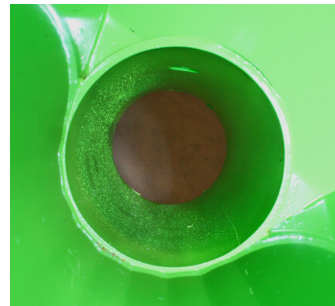
3. Allow two cleaning balls to pass through the hose or as many as needed until the water is completely clean.



4. Rinse clean hopper and mantle with clean water, fill up some water in the hopper and start the pump and run out of the water, repeat until clean water comes out of the mantle.

5. Remove the mixer shaft and clean it from the screeds residue.

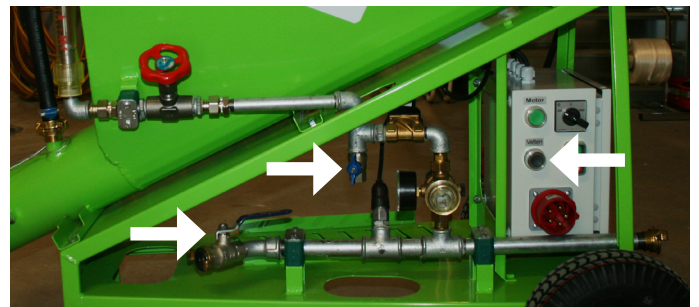
6. Loosen the jacket with the wedges and flush out the hose coupling in the bottom.



7. Check the mixing pipe on the pump and scrape any deposits.

8. Rinse off the entire pump, but avoid rinsing directly on electrical components.

9. Disconnect the water connection.



10. Get in the habit of always emptying the entire system of water by opening both blue taps and holding down the **Water (Vatten)** button.

11. Disconnect incoming power.